


CONTACT US

www.topdon.com
sales@topdon.com
support@topdon.com
Social Media: @topdonofficial | @topdonusa | @topdoneurope


(Global Headquarters) +86-755-21612590
(North America) +1-833-629-4832
(Europe) +34 931677441

ADDRESS

TOPDON HQ
20/F, No.3040 Xinghai Avenue,
Qianhai Shimao Tower,
Qianhai Shenzhen-HongKong Cooperation Zone,
Shenzhen, PR, China | 518000

USA TOPDON Office
400 Commons Way, Suite A Rockaway, NJ 07866

TOPDON EU
C/ Sant Elies 29-35 planta 2ª puerta 1ª
escalera B, Barcelona, Cataluña, 08006, Spain

TOPDON®

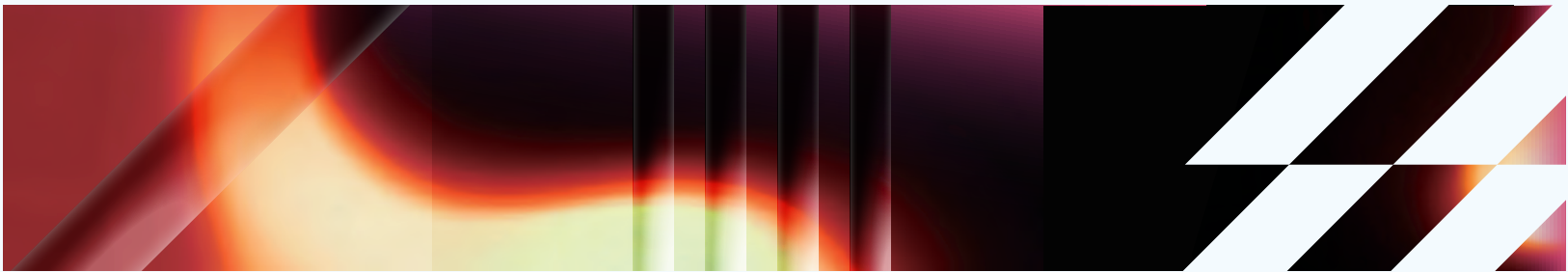


CATALOG



THERMAL CAMERAS

See More
Than the Human Eye



Introduction	1	Home & Building	2	Mechanical & Electrical	3
About TOPDON Thermal Imaging Basics		Applications Thermal Camera for Smartphones · TC001/TC002/TC002C Comparison Chart		Applications Thermal Camera for Smartphones · TC001 Plus · TS001 Tablet Thermal Camera · TC003 Comparison Chart	
Industrial	4	Outdoor	5	Driving Security	6
Applications Handheld Thermal Camera · TC004 Mini · TC004 SE · TC004 · TC005 Comparison Chart		Applications Thermal Monocular · TS004 · TS005 Comparison Chart		Applications Thermal Night Vision Camera for Vehicles · NV001 Specifications	

CONTENTS

About TOPDON

At TOPDON, we believe automotive repair should be accessible to everyone. Whether you're a seasoned technician, a DIY enthusiast, or just starting your automotive journey, we provide the tools and expertise to make the process easier and more efficient.

We are committed to supporting customers throughout the entire repair process. From pinpointing the issue to finding the right solution, we're here to guide you every step of the way.

Founded in 2017, TOPDON was born from a deep understanding of the automotive aftermarket. With over 20 years of experience in the industry, our founder possesses a keen eye for customer needs and market trends. This allows us to anticipate future challenges and consistently deliver innovative solutions that exceed expectations.

Today, TOPDON has a team of over 300 top engineers and holds more than 500 patents and software copyrights. We are dedicated to developing cutting-edge products that are not only accurate and efficient but also incorporate the latest technological advancements. Our products are shipped to over 110 countries worldwide, reaching customers across the globe.



What is Thermal Imaging?

Thermal imaging is a technology that allows us to “see” heat. It captures heat radiation and turns it into visual images, revealing temperature differences that traditional cameras can’t see. Once reserved for military and industrial use, this technology is now accessible for everyday applications.

Why Choose TOPDON Thermal Imaging?

Diverse Applications



Our thermal imaging solutions cover a wide range of scenarios, including home, electrical, industrial, outdoor, and automotive applications.

Versatile Forms

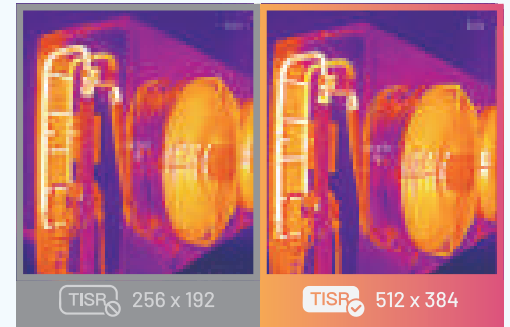


We offer various thermal imaging devices, including handheld, mobile, monocular, and tablet options, catering to different needs.

TISR Technology



We boast Thermal Image Super Resolution (TISR) technology, enhancing the clarity and sharpness of thermal images without adding to your costs.



Home & Building

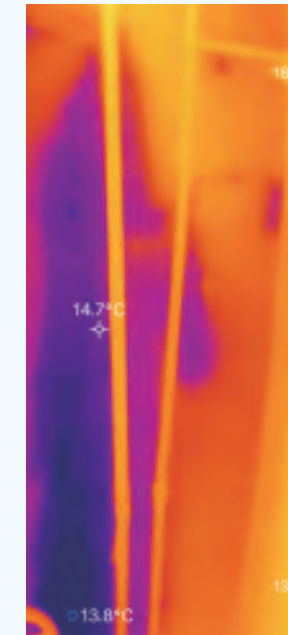
Applications

Identifying potential issues in residential properties—both before and after they arise—is crucial for homeowners. Thermal cameras serve as an invaluable tool in uncovering hidden problems such as air leaks, moisture intrusion, and inadequate insulation. By effectively highlighting temperature variations, they provide clear visual evidence that can guide homeowners in making informed repair decisions.

HVAC Inspection



Water Leakage



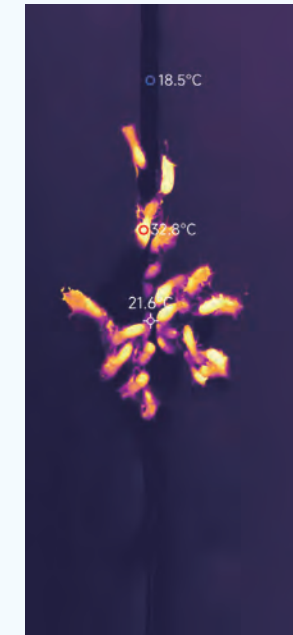
Insulation



Pipeline & Ventilation



Pest Detection





TC001/TC002/TC002C

1
Sharper Thermal Imaging

Featuring 256x192 IR resolution and a 25 Hz refresh rate, the camera innovatively employs TISR technology to further enhance resolution, revealing finer details.

2
Built for Mobility

This compact, pocket-sized design integrates seamlessly with your phone, providing reliable temperature monitoring on the go.

3
Lower Consumption, Longer Lasting

With just 0.35W power consumption, it extends runtime by drawing power directly from your phone—no extra battery needed.

4
Intuitive TopInfrared App

Simplify inspections with step-by-step guidance and professional reporting, tailored for homeowners and inspectors alike.

Comparison Chart

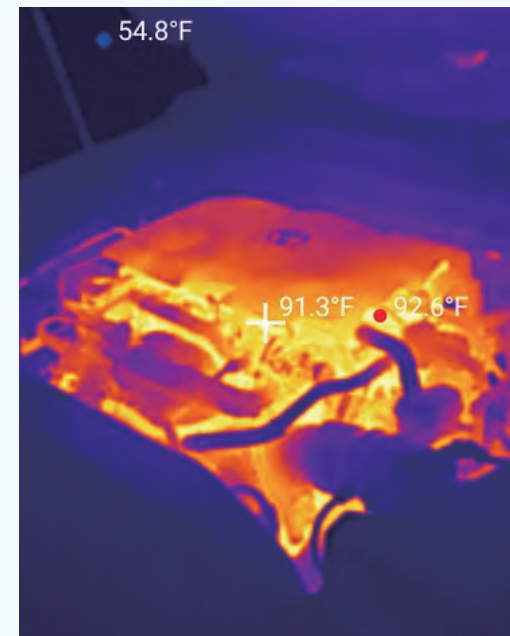
Model	 TC001	 TC002	 TC002C
IR Resolution	256*192	256*192	256*192
 TISR	✓	✓	✓
 Operating System	Android/Windows/Linux	iOS Lightning devices	iOS USB-C devices
Field of View (FOV)	56°*42°	56°*42°	56°*42°
NETD	<40mK	<40mK	<40mK
 Refresh Rate	25Hz	25Hz	25Hz
Focal Length	3.2mm (0.12 inches)	3.2mm (0.12 inches)	3.2mm (0.12 inches)
Measurement Accuracy	±2°C (±3.6°F) or ±2%	±2°C (±3.6°F) or ±2%	±2°C (±3.6°F) or ±2%
Object Temperature Range	-20°C to 550 °C (-4°F to 1022°F)	-20°C to 550 °C (-4°F to 1022°F)	-20°C to 550 °C (-4°F to 1022°F)
Identification Distance	0.1 - 50m (0.32 - 164ft)	0.1 - 50m (0.32 - 164ft)	0.1 - 50m (0.32 - 164ft)
PC-Based Analysis	✓	✓	✓
Palettes	10 colors (customized mode)	11 colors (customized mode)	11 colors (customized mode)
Video Recording	✓	✓	✓
Weight	30 g (0.06 lbs)	30 g (0.06 lbs)	30 g (0.06 lbs)
Dimensions	71mm x 42mm x 14mm (2.8 inches x 1.65 inches x 0.55 inches)	71mm x 42mm x 14mm (2.8 inches x 1.65 inches x 0.55 inches)	71mm x 42mm x 14mm (2.8 inches x 1.65 inches x 0.55 inches)
What's in the Box	TC001 Thermal Camera Multifunctional Adapter Cable Cleaning Cloth Quick User Guide Carrying Bag Packing Box	TC002 Thermal Camera Multifunctional Adapter Cable Lightning to USB-C Cable Cleaning Cloth Quick User Guide Carrying Bag Packing Box	TC002C Thermal Camera 50cm USB-C Extension Cable USB-C to Lightning Cable Cleaning Cloth Quick User Guide Carrying Bag Packing Box

Mechanical & Electrical

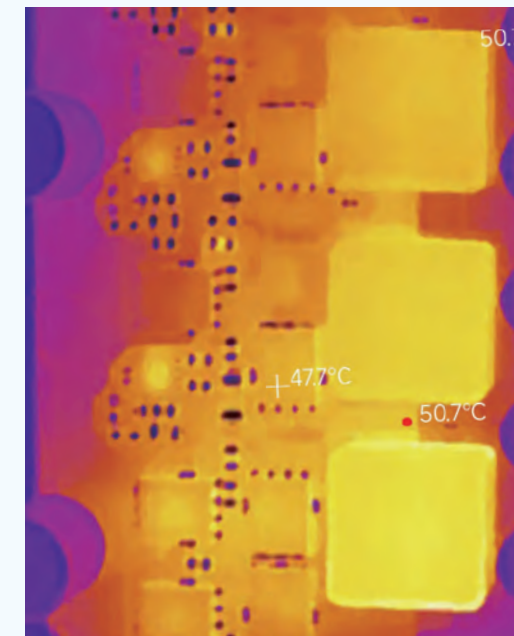
Applications

Traditional methods often miss hidden issues or take too long to detect in mechanical and electrical systems. TOPDON thermal cameras can quickly detect overheating components, helping you pinpoint problems in automotive repairs, electrical systems, and electronics. By visualizing temperature variations, you can identify issues in circuit boards, engines, and machinery, enabling faster and more accurate repairs.

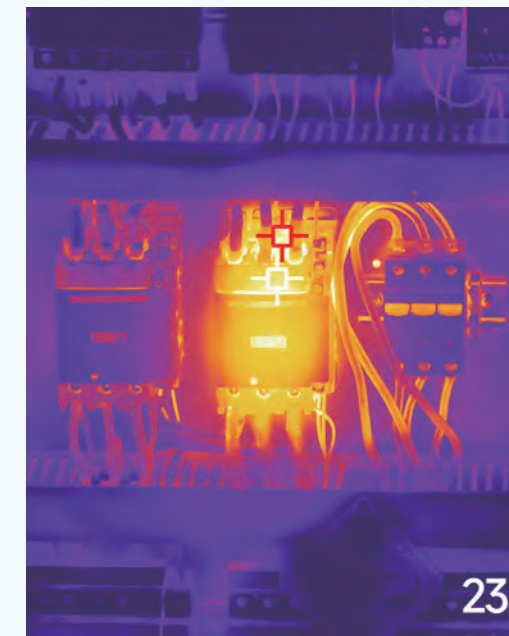
Engine Systems

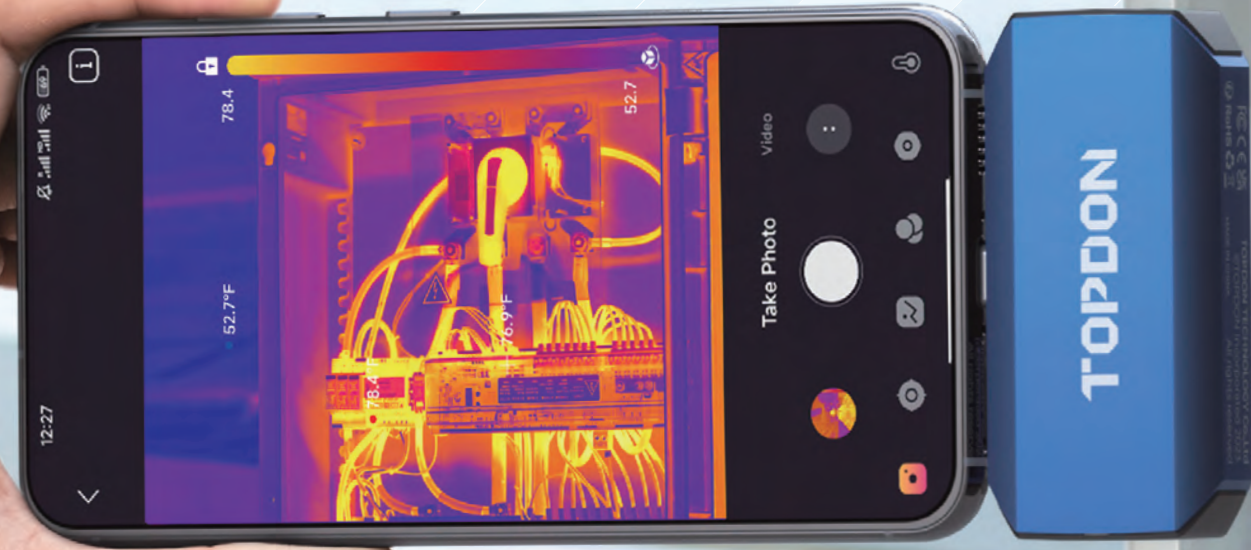


PCB Circuit Board Diagnostics



Electrical Systems





TC001 Plus

⚡ Dual Lens Thermal Camera for Smartphones



Its infrared lens and 1MP visual lens, along with the image fusion tech enable clear identification of electrical issues by revealing both original colors and thermal contours for precise diagnostics.

1 Enhanced Image Clarity

Featuring 256x192 IR resolution and a 25 Hz refresh rate, the camera innovatively employs TISR technology to further enhance resolution, revealing finer details.

2 Professional Software Analysis

Enjoy seamless temp detection and data analysis with the TOPDON PC software and TopInfrared app. Get detailed reports and export temp charts for quick identification.

3 Extensive & Accurate Temp Measurement

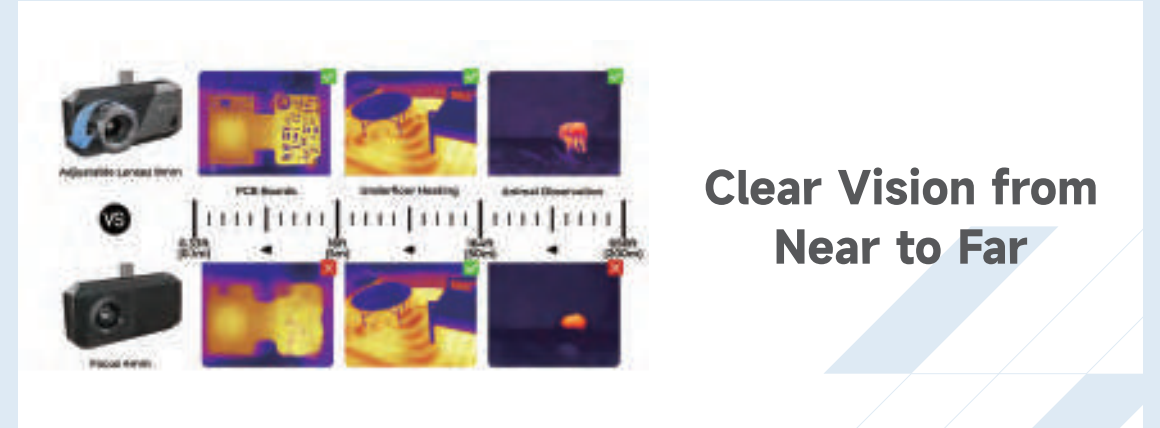
Measures -4°F to 1022°F (-20°C to 550°C) with an accuracy of up to 3.6°F (2°C) or 2% of the reading.

4 Portable yet Durable

At just 2.8x1.65x0.55 inches and 1 ounce (30g), it fits easily in your toolbag. Built tough to withstand drops of up to 1m, it ensures reliability in every thermal task.

TS001

⚡ Sharp Focus, Close or Distant



Clear Vision from Near to Far

The adjustable 9mm lens gives you a clear view of small objects like electronic components as small as 1mm or distant objects like electrical and mechanical equipment from a safe distance.

1 Where Clarity Takes Center Stage

Featuring 256x192 IR resolution and a 25 Hz refresh rate, the camera innovatively employs TISR technology to further enhance resolution, spotting subtle temp variations.

2 Precision Pathfinders of Heat and Cold

Measures -4°F to 1022°F (-20°C to 550°C) with an accuracy of 0.1°C and an error margin of less than 3%.

3 Swipe to Highlight Temperature Variance

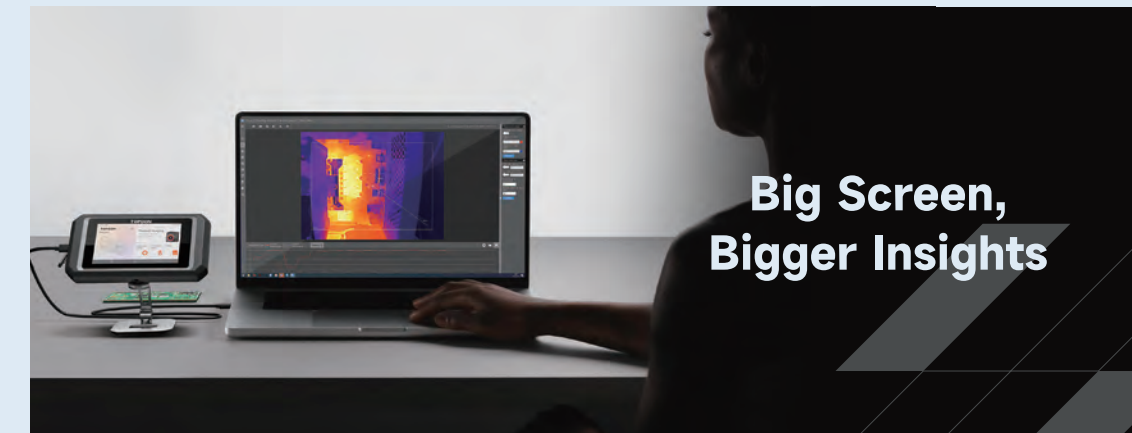
Easily set the temp range you want to spotlight with the intuitive bar in the TopInfrared app, so you can tailor your thermal view to focus on what matters to you most.

4 Essential Accessories Included

Comes with a secure camera holder for easy attachment to your phone and a USB data cable for convenient remote viewing in tight spaces.

TC003

⚡ Standalone Thermal Camera with A Large Display



Use its 5-inch large screen for more thermal details or live stream the device to a laptop or computer for advanced image analysis.

1 Enhanced Clarity with TISR

Featuring 256x192 IR resolution and a 25 Hz refresh rate, the camera innovatively employs TISR technology to further enhance resolution, revealing intricate temperature details.

2 Highly Accurate Temperature Readings

With 40mK sensitivity and $\pm 2^{\circ}\text{C}$ accuracy, even the smallest temperature shifts become visible, ensuring pinpoint diagnostics.

3 An Ideal Choice for Home Inspectors

Streamline your house inspection process with features for accurate positioning, report generation, and easy sharing of results with clients.

4 Quick Vehicle Diagnostics

Use preset temperature prompts for different components to identify faults swiftly and improve repair efficiency.

5 OTG Functionality

Easily connect with endoscopes and other devices for specialized tasks, including inspecting hard-to-reach areas.

6 Four Imaging Modes

Switch between 4 imaging modes—visible, thermal, fusion, and outline fusion—for tailored thermal insights.




Comparison Chart

1/2

	 TC001 Plus	 TS001	 TC003
Model			
IR Resolution	256*192	256*192	256*192
 TISR	✓	✓	✓
 Visible Light Lens	1MP	×	5MP
Operating System	Android/Windows/Linux	Android/Windows/Linux	Android/Windows
Field of View (FOV)	56°*42°	13°*10°	56°*42°
NETD	<40mK	<40mK	<40mK
 Refresh Rate	25Hz	25Hz	25Hz
 Focal Length	3.2mm (0.12 inches)	9mm (0.35 inches)(Adjustable focus)	3.2mm (0.12 inches)
Identification Distance	0.1 - 50m (0.32 - 164ft)	0.1 - 200m (0.32 - 650ft)	0.1 - 50m (0.32 - 164ft)
Detection Distance	80 - 320m (262 - 1049ft)	80 - 500m (262 - 1640ft)	80 - 320m (262 - 1049ft)
Measurement Accuracy	±2°C (±3.6°F) or ±2%	±3°C (±5.4°F) or ±3%	±2°C (±3.6°F) or ±2%
Object Temperature Range	-20°C to 550 °C (-4°F to 1022°F)	-20°C to 550 °C (-4°F to 1022°F)	-20°C to 550 °C (-4°F to 1022°F)
PC-Based Analysis	✓	✓	✓
Palettes	10 colors (customized mode)	10 colors (customized mode)	11 colors
Battery Capacity	×	×	5000mAh
Battery Life	/	/	4h
Display	×	×	5 inch, 800*480 touchscreen
Storage	×	×	2GB RAM+32GB storage
LED Flashlight	×	×	✓
Video Recording	✓	✓	✓

Comparison Chart

2/2

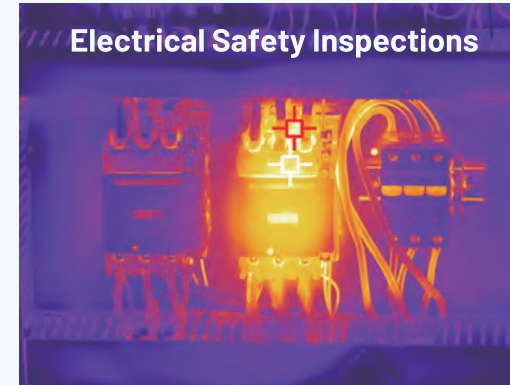
	 TC001 Plus	 TS001	 TC003
Model			
Protection Level	/	/	IP55
Weight	30 g (0.06 lbs)	45 g (0.1 lbs)	367 g (0.8 lbs)
Dimensions	71mm x 42mm x 14mm (2.8 inches x 1.65 inches x 0.55 inches)	70mm x 46mm x 28mm (2.8 inches x 1.8 inches x 1.1 inches)	178mm x 96mm x 20mm (7 inches x 3.8 inches x 0.8 inches)
What's in the Box	TC001 Plus Thermal Camera 50cm Multifunctional Extension Cable Cleaning Cloth Quick User Guide EVA Carrying Bag Package Box	TS001 Thermal Camera USB Data Cable Lens Cap Thermal Camera Holder Cleaning Cloth Quick User Guide Carrying Case Package Box	TC003 Thermal Camera USB-A to USB-C Cable Power Adapter Plugs x4 Cleaning Cloth User Manual Carrying Bag Package Box

Industrial

Applications

In industrial settings, the reliability, battery life, and protection rating of thermal cameras are crucial for ensuring both efficiency and safety. Designed for harsh environments, these devices provide non-invasive monitoring for sectors such as electrical, civil engineering, aerospace, and renewable energy. They help identify potential issues early, extend the lifespan of critical components, and minimize downtime, ensuring smooth operations in even the most demanding industrial conditions.

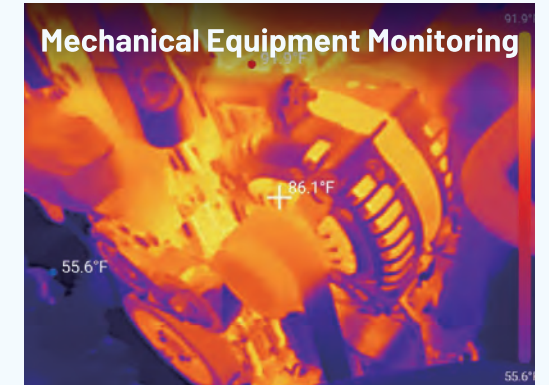
Electrical Safety Inspections



Solar Panel Maintenance



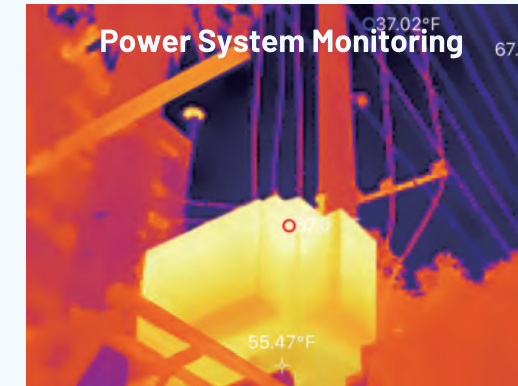
Mechanical Equipment Monitoring



Aerospace Component Checks



Power System Monitoring

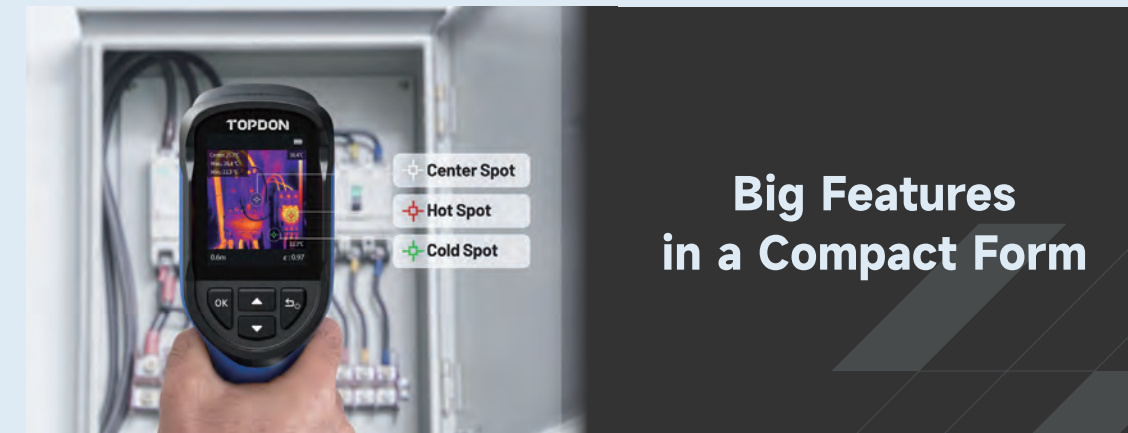


Civil Infrastructure Assessments



TC004 Mini

⚡ Mini Size, Great Value



The entry-level handheld thermal camera packs big features into a small size, offering outstanding thermal imaging at an unbeatable price.

1 TISR Technology

With TISR on, TC004 Mini camera is enhanced to 240*240 IR resolution for more detailed visuals.

2 Extended Battery Life

An impressive 15-hour runtime with auto-shutoff options (5/10/20 mins) to keep you powered longer.

3 High & Low Temp Alerts

Automatically triggers an alert when temperatures exceed the set limits.

4 Auto Detection

Effortlessly identify anomalies with automatic detection of max, min, and center temperature spots.

TC004 SE

⚡ Your All-Day Thermal Companion



The Longest Battery Life Ever



It offers up to 21 hours of continuous use at the lowest screen brightness and 16 hours at the highest screen brightness, giving you peace of mind during extended tasks.

1 Video Recording

Easily record videos during inspections, enabling quick documentation of your findings for later review.

2 32GB Ample Storage

Save up to 160,000 images or hours of videos for later review and analysis.

3 PC Image Analysis

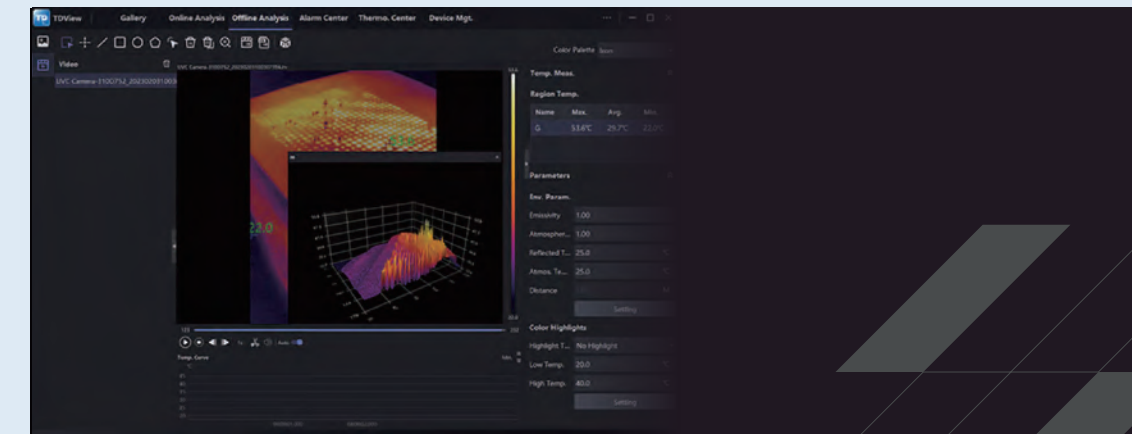
Instantly project and analyze thermal images on a larger screen when connected to a PC.

4 4X Digital Zoom

Easily capture temperature details near and far with 4X digital zoom, improving your work efficiency.

TC004

⚡ Advanced Thermal Camera with High IR Resolution



Easily transfer images to the PC software via USB for real-time temperature measurement, 3D image analysis, and more.

1 Enhanced TISR Resolution

The TISR tech improves image clarity, making it easier to identify subtle temperature variations during building inspections, HVAC check, or vehicle maintenance tasks.

2 Smart Detection

Automatically track max/min/center spots to pinpoint temperature anomalies at a glance.

3 Long Battery Life

With a remarkable 12-hour battery life, it provides peace of mind during extended tasks.

4 Quick Diagnostic

Simplify vehicle inspections with guided temperature range prompts for key components.

TC005

⚡ Dual Lens Thermal Camera with Full Function Analysis



Dual Lens, More Image Modes

Comes with a 2MP visible light camera and an infrared camera, providing 4 image modes - Thermal Imaging, Dual Light, Visible Light, and Image in Image - to suit your preferred view.

1 PC Image Analysis

Professional analysis software allows users to easily save and share diagnostic data on a PC.

2 Enhanced Thermal Clarity

Get finer details and sharper contrasts of your target with TISR technology.

3 Efficient Temp Measurement

Automatically track max/min/center spots to pinpoint temperature anomalies at a glance.

4 Effortless Vehicle Detection





Get normal temp range prompts for different components, allowing for quick fault diagnosis.

Comparison Chart

				
Model	TC004 Mini	TC004 SE	TC004	TC005
⚡ IR Resolution	128*128	256*192	256*192	256*192
⚡ TISR	✓	✗	✓	✓
Field of View (FOV)	40°*30°	56°*42°	52.5°*39.5°	52.5°*39.5°
NETD	<40mK	<40mK	<40mK	<40mK
Refresh Rate	25Hz	25Hz	25Hz	25Hz
Focal Length	2.6mm (0.1 inches)	3.2mm (0.12 inches)	3.2mm (0.12 inches)	3.2mm (0.12 inches)
Identification Distance	0.1 - 33m (0.32 - 108ft)	0.1 - 40m (0.32 - 131ft)	0.1 - 40m (0.32 - 131ft)	0.1 - 40m (0.32 - 131ft)
Measurement Accuracy	±2°C (±3.6°F) or ±2%	±2°C (±3.6°F) or ±2%	±2°C (±3.6°F) or ±2%	±2°C (±3.6°F) or ±2%
Object Temperature Range	-20°C to 450 °C (-4°F to 842°F)	-20°C to 550 °C (-4°F to 1022°F)	-20°C to 350°C (-4°F to 662°F)	-20°C to 550 °C (-4°F to 1022°F)
⚡ Magnificationt	✗	1x/2x/4x	1x/2x/4x	1x/2x/4x
Measurement Modes	Center spot/hot spot/cold spot	Center spot/hot spot/cold spot	Center spot/hot spot/cold spot	Center spot/hot spot/cold spot
⚡ PC-Based Analysis	✗	✓	✓	✓
⚡ Visible Light Lens	✗	✗	✗	2MP
Palettes	5 colors	10 colors	5 colors	7 colors
Battery Capacity	2900mAh	5300mAh	5000mAh	5000mAh
⚡ Battery Life	15h	16h (High Brightness) 21h (Low Brightness)	12h	12h
Display	2.4 inch, 320*240 screen	2.8 inch, 320*240 screen	2.8 inch, 320*240 screen	2.8 inch, 320*240 screen
Storage	512MB Built-in Storage	32GB Built-in Storage	2GB RAM+32GB TF card	2GB RAM+32GB TF card
LED Flashlight	✗	✓	✓	✓

1/2

Comparison Chart

				
Model	TC004 Mini	TC004 SE	TC004	TC005
⚡ Video Recording	✗	✓	✓	✓
Protection Level	IP54	IP54	IP54	IP54
Weight	350 g (0.77 lbs)	520 g (1.14 lbs)	520 g (1.14 lbs)	520 g (1.14 lbs)
Dimensions	202mm × 82mm × 60mm (7.95 inches x 3.23 inches x 2.36 inches)	240mm x 70mm x 90mm (9.45 inches x 2.76 inches x 3.54 inches)	240mm x 70mm x 90mm (9.45 inches x 2.76 inches x 3.54 inches)	240mm x 70mm x 90mm (9.45 inches x 2.76 inches x 3.54 inches)
Updates	Connecting to PC for updates	Connecting to PC for updates	Connecting to PC for updates	Connecting to PC for updates
Operating System	Standalone use	Standalone use/Windows devices	Standalone use/Windows devices	Standalone use/Windows devices
What's in the Box	TC004 Mini Thermal Camera USB-A to USB-C Cable Hanging Strap Quick User Guide	TC004 SE Thermal Camera USB Data Cable Power Adapter Calibration Certificate Product Certificate User Manual Storage Bag Package Box	TC004 Thermal Camera 32GB TF card USB Data Cable Power Adapter Plugs x4 Calibration Certificate Product Certificate User Manual Storage Bag Package Box	TC005 Thermal Camera 32GB TF card USB Data Cable Power Adapter Plugs x4 Calibration Certificate Product Certificate User Manual Storage Bag Package Box

2/2



Outdoor

Applications

With advanced thermal imaging technology, you can uncover hidden wildlife in the dark, navigate rugged trails with confidence, and stay safe during nighttime adventures. Whether you're observing animals, embarking on a mountain expedition, or assisting in search and rescue operations, TOPDON thermal monoculars bring clarity to the unknown, empowering every step of your journey.



Camping



Wildlife Observation



Farming



Search & Rescue

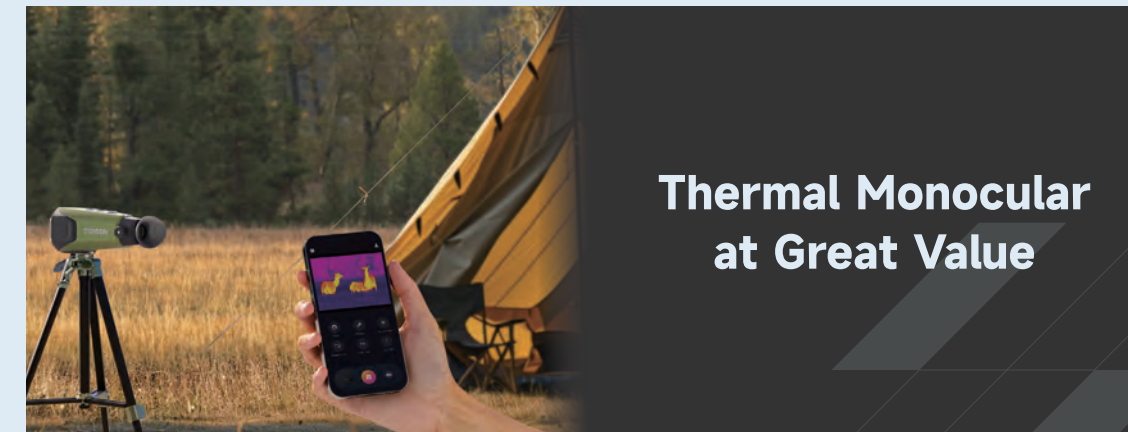


Outdoor Adventure



TS004

⚡ Be Bold, Go Wild



Thermal Monocular at Great Value

It offers smooth thermal images, a long 11-hour runtime, and a 450yd (410m) detection range, making it the value-packed choice for wildlife observation and outdoor adventures.

1 Sharper Vision with TISR

Featuring 256x192 IR resolution and a 50Hz refresh rate, the monocular innovatively employs TISR technology to further enhance resolution, capturing every detail and movement clearly.

2 Extended Battery Life

Stay operational for over 11 hours with a high-efficiency 5000mAh battery, providing ample time for outdoor activities without interruption.

3 Stand Up to Any Environment

With an IP67 rating, it stands strong against heavy rainfall, snow, mud, and other forms of precipitation.

4 Zoom into Details

Up to 8X digital zoom enables close-up details of small targets from a great distance.

5 Real-Time Monitoring

Wirelessly connect it to your phone via the TopInfrared app for effortless real-time monitoring, image capture, and video recording on the go.

6 Compact & Easy to Use

A lightweight design, intuitive controls, and a waterproof strap make it the perfect companion for wilderness exploration.

TS005

⚡ Explore Like a Pro



Precise Distance Measurement



Designed for professionals, it includes an integrated laser rangefinder to deliver precise distance readings up to 650yd (594m), allowing you to track targets with confidence.

1 Up to 1400YD Detection Range

Effortlessly identify heat variations up to 1400yd (1280m) with the 35mm adjustable telephoto lens.

2 Superior Imaging for Any Challenge

With a high 384x288 resolution, NETD < 35mK, and a fast 50Hz refresh rate, the TS005 ensures smooth, sharp thermal imaging for seamless tracking of moving targets.

3 High-Resolution OLED Display

The 1024 * 768 OLED screen and an advanced 12μm sensor bring every scene into sharp focus, delivering the finest details in any situation.

4 Replaceable & Rechargeable Battery

Experience seamless operation with two replaceable 18650 batteries. You can carry extras for quick swaps without worrying about polarity.

5 64GB Built-in Storage












Store over 2 million high-definition images or record hours of video with clear audio, ensuring every adventure is preserved for review and sharing.

6 Variable Magnification

Up to 8x digital zoom allows you to observe distant wildlife with incredible clarity as if they were right in front of you.

Comparison Chart

1/2

Model	 TS004	 TS005
 Ideal For	Enthusiasts	Professionals
 IR Resolution	256 * 192	384 * 288
 TISR	✓	✗
Refresh Rate	50Hz	50Hz
 Objective Lens	13mm	35mm (Adjustable)
Crosshair	✗	✓
Magnification	1x, 2x, 4x, 8x	1x, 2x, 4x, 8x
Field of View (FOV)	13.5° * 10.1°	10.4° * 7.9°
Display	640 * 480 LCOS	1024 * 768 OLED
 Detection Distance	 TS004·450yd (410m)	 TS005·1400yd (1280m)
 Laser Measurement	 TS005·650yd (594m)	
Video Recording	✓	✓
Battery Capacity	5000mAh	Replaceable Battery, 3300mAh
Battery Life	11h	6h (two batteries, 3h for each)
Protection Level	IP67	IP65

Comparison Chart

2/2

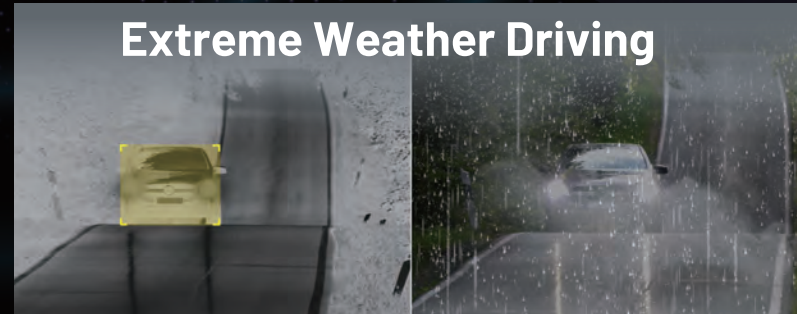
Model	 TS004			 TS005		
Scenario	 Observing	 Rescue	 Farming	 Adventure	 Security (TS005 Only)	 Enforcement (TS005 Only)
What's in the Box	TS004 Thermal Monocular USB-A to USB-C Cable Hanging Strap Carrying Bag Quick User Guide			TS005 Thermal Monocular USB-A to USB-C Cable Video Cable Battery Charger Battery x2 Carrying Bag Quick User Guide Package Box		

Driving Security

Nighttime Road Safety



Extreme Weather Driving



Anti-Glare Highway Driving



Hazard Detection

(People, Animals, and Vehicles)



NV001

⚡ 656ft (200m) Long-Range Automotive Night Vision System

1 IP69K Waterproof & Dust-Proof

Built to endure rain, dust, and harsh conditions, the NV001 ensures reliable performance in any environment.

2 Superior Image Enhancement

Enjoy sharper visuals with the enhanced 384x288 IR resolution, delivering superior image clarity and detail for safer nighttime driving.

3 Smart Detection & Anti-Collision Warning

Advanced AI detects people, vehicles, and animals, offering real-time alerts to prevent collisions and enhance safety.


4 Universal Vehicle Compatibility


Compatible with trucks, buses, cars, Jeeps, and RVs, making it a versatile safety upgrade for all drivers.


Specifications


Model	 NV001
Resolution	256×192
Viewing Range	656ft (200m)
Pixel Size	12μm
Spectral Range	8-14μm
Focal Length	4.3mm
Optimal Identification Distance	1m~50m
Field of View (FOV)	H40°
Refresh Rate	50Hz
Power Supply	DC 12V (car cigarette lighter)
Power Consumption	≤6W; ≤9W (defrosting)
Operating Temperature	-20°C to +80°C (-4°F to 176°F)
IP Rating	IP69K (thermal imager); IP54 (in-car unit)
Size	W: 95mm, L: 111mm, H: 51mm (in-car unit); W: 33mm, L: 25mm, H: 27mm (camera)
Weight	< 500g


What's in the Box



In-Car Unit



Thermal Camera



5m Coaxial Cable


Adhesive Sticker


User Manual


Anti-Theft Screw Bag


Dual USB + 12V DC
Cigarette Lighter


License Plate Frame Mounting Kit

